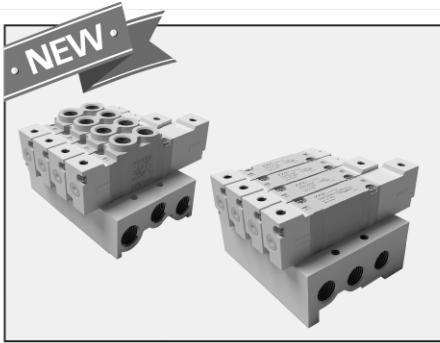


# DVP1000 - 3000 - 4000 Series

5 Port Air Operated Valve

Directional Control Valve

DVP1000-3000-4000 Series



- High reliability
  - High durability
  - Prevents spool abrasion with wear-ring
  - Piston return type
- Large Capacity
  - Expanded effective area (2.5 times bigger than standard)
- Variability
  - Integrated exhaust type by default
  - Equipped with external pilot

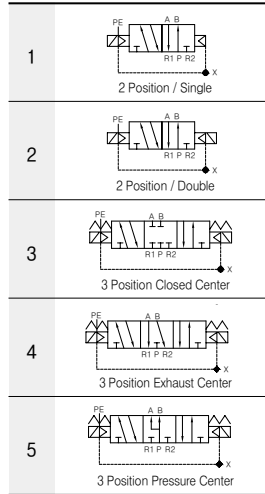
## How to Order

**DVP** 1 1 20 — M5

1    2    3    4

- 1** DVP Valve Series  
 1 : DVP 1000 Series  
 3 : DVP 3000 Series  
 4 : DVP 4000 Series

**2** Configuration



**3** Mounting

- 20 : body ported  
 40 : base mounted

**4** Option

- ※ Sub-Plate (Base Mounted Type)  
 Blank : no sub-plate  
 M5 : M5 X 0.8(DVP1000 Series)  
 01 : Rc(PT)1/8(DVP3000 Series)  
 02 : Rc(PT)1/4(DVP4000 Series)

※ Fitting(Body Ported Type)

Part No.	TAP size	Orifice
Blank	Built-in fitting	all series
T4	Ø4 one touch fitting	DVP1000 series
T6	Ø6 one touch fitting	DVP1000 series
T4	Ø4 one touch fitting	DVP3000 series
T6	Ø6 one touch fitting	
T8	Ø8 one touch fitting	DVP4000 series
T8	Ø8 one touch fitting	
T10	Ø10 one touch fitting	DVP4000 series

## How to Order

Port Plug Ass'y with Built-in Fitting

**DVP** 1 **000** — M5

1    2

- 1** DVP Valve Series  
 1 : DVP 1000 Series  
 3 : DVP 3000 Series  
 4 : DVP 4000 Series

**2** Fitting for Body Ported Type

Part No.	TAP size	Orifice
T4	Ø4 one touch fitting	DVP1000 series
T6	Ø6 one touch fitting	DVP1000 series
T4	Ø4 one touch fitting	DVP3000 series
T6	Ø6 one touch fitting	
T8	Ø8 one touch fitting	DVP4000 series
T8	Ø8 one touch fitting	
T10	Ø10 one touch fitting	DVP4000 series