



TPC INFORMATION


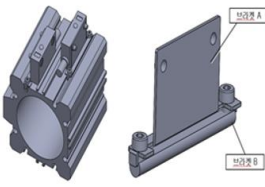
January, 2022

Subject: Product Change Notification

To whom it may concern,

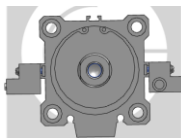
TPC Mechatronics sincerely appreciates your usage of our products. This letter is to notify you that mounting bracket of AQ2 / pin shift cylinders for W2P auto switch will be improved.

1. Product of change: Mounting bracket of W2P for AQ2 / pin shift cylinder

	Current		New	
W2P bracket				
Mounting	Attach on mounting rail		Bracket on micro switch mounting rail	
Part number	BQP1T-050		BQP2T-050	
Applicable types	Ø40	All strokes	Ø40	X
	Ø50	Stroke 5~20mm	Ø50	Stroke 25mm or longer (including long stroke types)
	Ø63		Ø63	
	Ø80		Ø80	
	Ø100		Ø100	

2. Details :

A. Before : 2pcs of auto switch had to be attached on 2 different sides due to confliction of mounting bracket (for Ø50~100 / 5~50 stroke)



B. After : 2pcs of auto switch can be mounted on the same side (for Ø50~100 25mm or longer stroke)

→ New improved bracket can't be applied for 5~20mm stroke due to insufficient space, and switch sensitivity

3. Effective Date: Starting from January 28th, 2022

※ Please contact us for any questions.