



TPC F.R.L Modular System

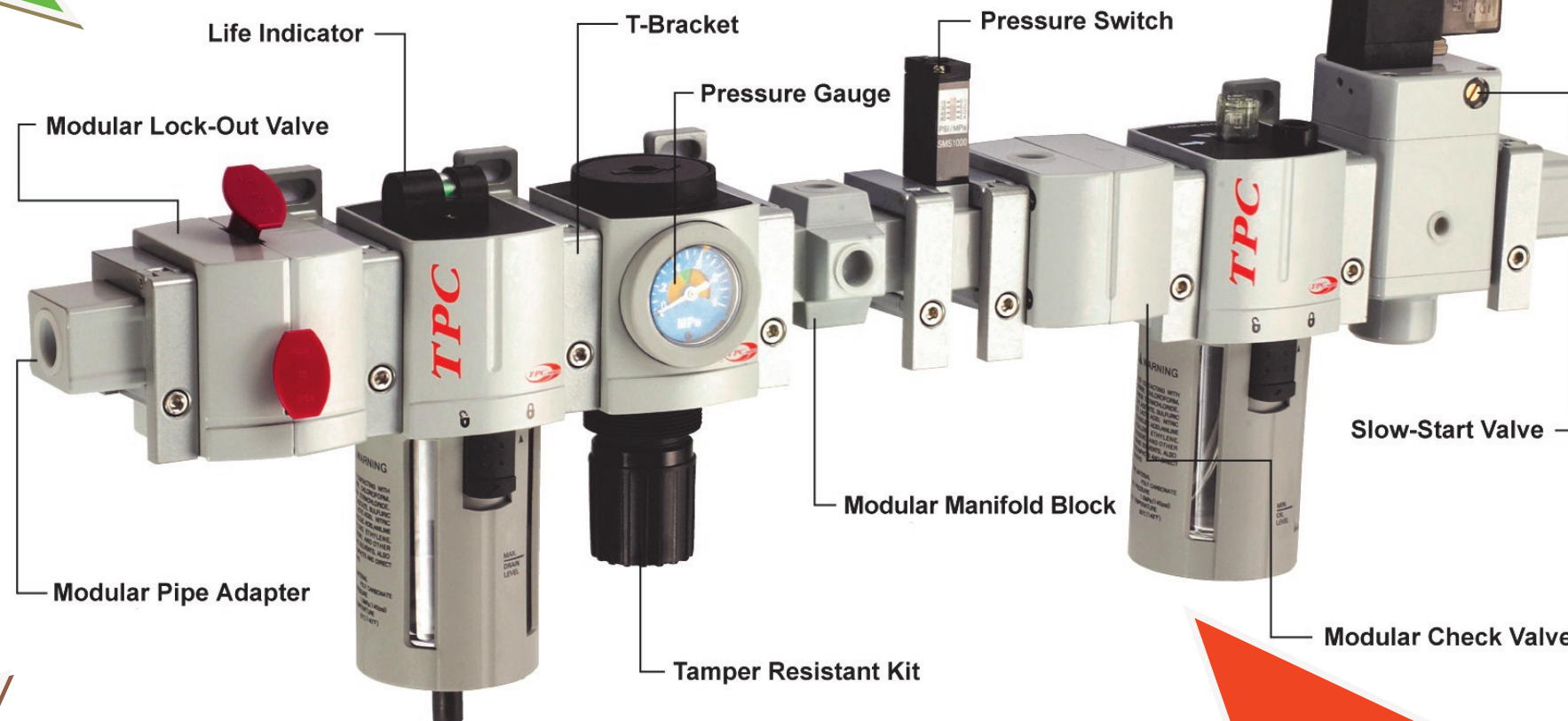
■ Built-in life indicator

Built-in life indicator for filter to show a visible alert when the filter needs replacement.



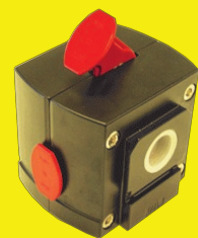
■ Settable gauge fan

The settable gauge fan for the regulator and piggyback regulator contains a visual reference that allows the user to display specific pressure ranges that is needed for certain application.



■ Modular lock-out valve

By utilizing a modular lock-out valve, you can close off the downstream air supply for maintenance and pressure isolation.



■ Pressure switch

The pressure switch is typically threaded into a manifold port block, and allows the sensing of high or low pressure thresholds set, by the user.



Web page

<http://www.tpcpage.com>
Please [click here](#) to download the catalog of TPC F.R.L.



Contact information

Contact person : Jimmy Cho
Email: jimmy@tanhay.com

Tel : +82-2-2691-8888

Fax : +82-2-2699-2225

South Korea.





■ TPC Technology

- Subminiature motor.
- Double sided linear motor.
- Customized linear motor.
- Magnet moving motor.



■ TPC Manufacturing

- Customized coil production.
 - Customized epoxy molding.
 - Customized magnet plate production.
- (Skew array / tubular / halbach array)

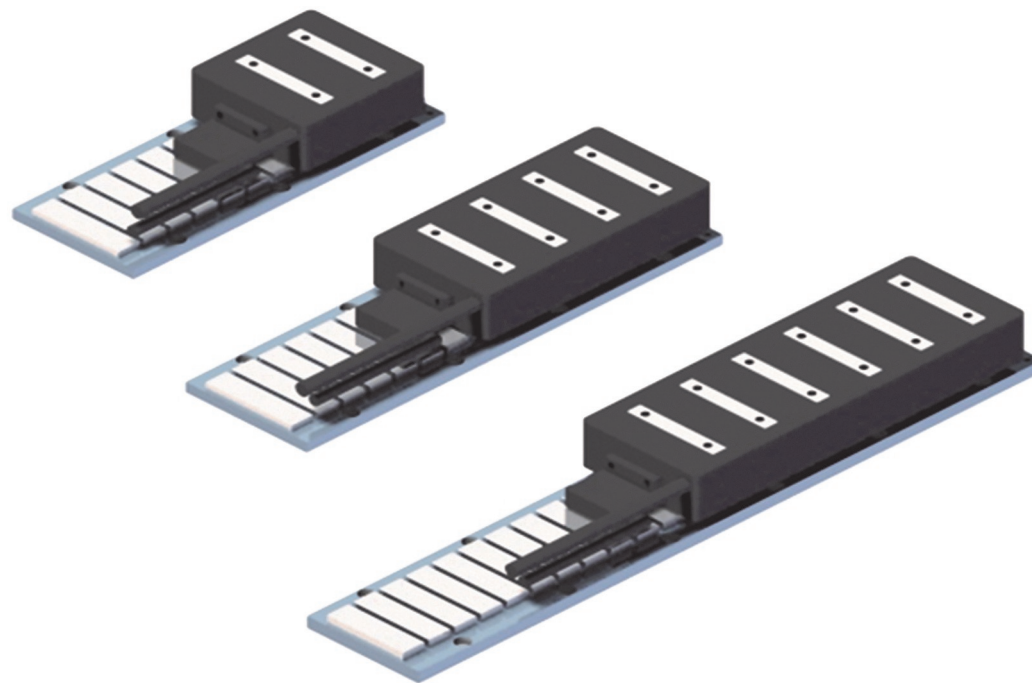


Please [click here](#) to download the catalog of TPC linear motor.

F series

Core type AC Linear Motor

FMIC / FMI / FSM / FMD / FLA / FLB



■ Special features

- Various 25 model line up (Max thrust force range: 8~3,195N).
- Sturdy epoxy mold structure of motor.
- Superior speed ripple : minimized cogging.
- Compact size with high density coil.
- Various common drives applicable.
- CE certificate.
- Competitive price.

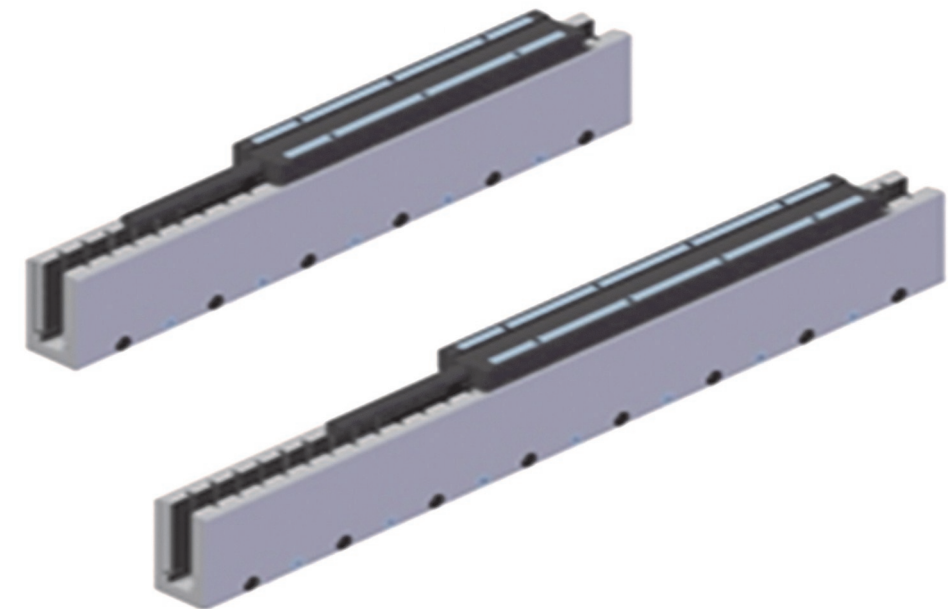
■ Applications

- Semiconductors and FPD equipment.
- Automated optical inspector.
- High speed conveyer lines.
- High speed and precise production lines.

G series

Coreless type AC Linear Motor

GMD / GLA



■ Special features

- Zero cogging force.
- Superior speed ripple, no noise and vibration.
- Good deceleration with light operator mass.
- Integral molding structure of operator.
- Various common drivers applicable.
- CE certificate.
- Competitive price.

■ Applications

- Semiconductor and FPD equipment.
- High speed and precise inspector.