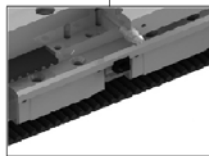
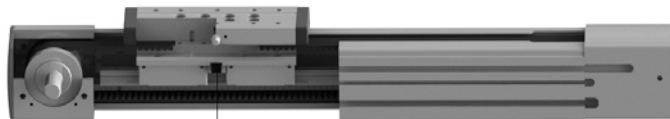
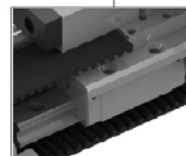


NQB/NQBE series



LM guide with high rigidity and high precision



Improved RPP timing belt with iron string inside.

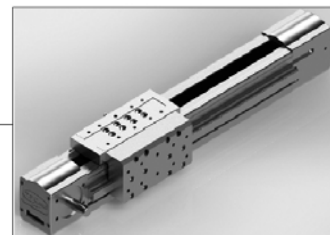
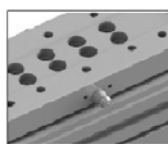
Various models of motor and reducer available



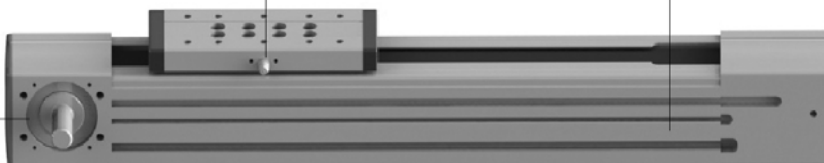
Customized slider available



Easy lubrication through slide block



Side-strengthened LM for sided loader cantilever





Features

- LM guide & belt type unit
- Compact design and high rigidity
- Various axis combination
- High tensile timing belt
- Easy lubrication through slide block
- Easy maintenance
- Side strengthened NQBE type available

How to order

① NQB
② 40
③ - 500
④ - 2000^{1 2 3 4}
⑤ L
⑥ - CA
⑦ - D2
⑧ - E1
⑨ -

① Series

NQB / NQBE

② Model

NQB : 40 / 60 / 80 / 100

NQBE : 60 / 80 / 100

※ LM : contact us for customized LM guide.

③ Stroke (Unit : mm)

40 : 100 ~ 800

60 : 100 ~ 2800

80 : 100 ~ 3700

100 : 100 ~ 3650

※ Contact us for longer stroke than standard.

④ Pulley type (0:Standard, 1:Coupling type 2:Shaft type)

Type Pully direction	Applicable model			
	40	60	80	100
0100	●	●	●	●
1100	●	●	●	●
2000	●	●	●	●
2200	●	●	●	●
1200	●	●	●	●



※ Contact us for customized pulley type.

⑤ Color

Blank : White(outer)

L:White + LM raydent

B:Black (outer)

BL:Black(outer)+LM raydent

⑥ Sensor

Blank : None

CA : Auto switch - basic 3EA

C : Photo sensor (dog included) - basic 3EA (EESX9 5 2 R), Additional sensor : symbol + n

⑦ Mounting bracket

Blank : None

D(Qty) : Necessary quantity, Example) D2, D3

※ Please refer to drawings for the shape of mounting bracket (ex clu ding NQB40)

⑧ Bracket of reducer (includ ing coupling)

Blank:None

Type	SIZE	Applicable model			
		40	60	80	100
E1	42	●	●		
E2	62			●	
E3	90			●	●
E4	120				●

※ Contact us for customized reducer bracket

⑨ Custom ized code

numbers granted for customized orders

※ Please contact us for accessories & components order.

Sensor

Item Number	Sensor
MS-2003-TPC-NO-PL (LIMIT)	
MS-2003-TPC-NC-PL (HOME)	
EE-SX952R-PL	 EE-SX952R

Sensor dog

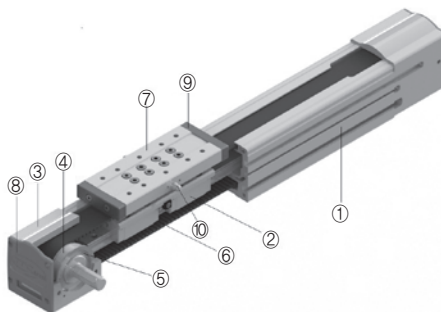
Model	Item number	Remarks
40	PDG-NQB40-PL	EE-SX952R
60	PDG-NQB60-PL	
80	PDG-NQB80-PL	
100	PDG-NQB100-PL	

NQB specifications

Specification	NQB40	NQB60	NQB80	NQB100
Max speed (mm/s)	850	1400	1500	2000
Payload (kgf)	20 (Horizontal)	50 (Horizontal)	70 (Horizontal)	120 (Horizontal)
Stroke (mm)	Max. 800	Max. 2800	Max. 3700	Max. 3650
Repeatability (mm)	± 0.05	± 0.05	± 0.05	± 0.05
Diameter of pulley (mm)	∅ 27.03	∅ 44.56	∅ 56.02	∅ 71.3
Pulley action perimeter (mm/rev)	85	140	176	224
No load torque (Nm)	0.5	1.0	1.4	1.8
Belt type	RPP5 / W15	RPP5 / W28	RPP8 / W40	RPP8 / W50
LM Guide	NO.12 / 1 Rail 2 Block	NO.15 / 1 Rail 2 Block	NO.20 / 1 Rail 2 Block	NO.30 / 1 Rail 2 Block
Basic weight (kgf)	1.5	4.0	10.9	20.2
Weight per 100mm stroke (kgf)	0.2	0.53	1.1	1.7
Motor (W)	50~100W	100~400W	200~750W	750~1.5KW
Size (mm, W x H)	40 x 56	60 x 80	80 x 105	100 x 130

Note) Customized options such as motor, raydent and LM guide are available.

NQB structure



► Component list

No	Item		Material	No	Item	Material
1	Rail		Aluminum alloy	6	Timing belt	Urethane
2	Model	LM GUIDE		7	Slide block	Aluminum alloy
	40	No.12 / 1RAIL 2BLOCK				
	60	No.15 / 1RAIL 2BLOCK				
	80	No.20 / 1RAIL 2BLOCK				
	100	No.30 / 1RAIL 2BLOCK				
3	Pulley box		Aluminum alloy	8	Cover	POM
4	Timing pulley		High carbon steel	9	Urethane stopper	Urethane
5	Bearing			10	Grease nipple	

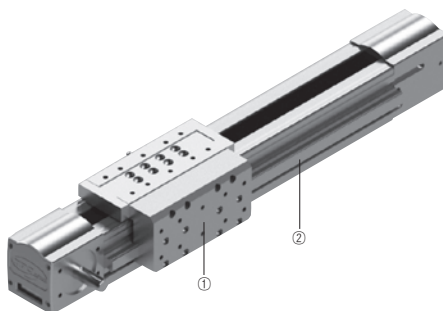
NQBE Series Specifications

NQBE specifications

Specification	NQBE60	NQBE80	NQBE100
Max speed (mm/s)	1400	1500	2000
Payload (kgf)	70 (Horizontal)	110 (Horizontal)	150 (Horizontal)
Repeatability (mm)	Max. 2800	Max. 3700	Max. 3650
Diameter of pulley (mm)	± 0.05	± 0.05	± 0.05
Pulley action perimeter (mm/rev)	Ø 44.56	Ø 56.02	Ø 71.3
No load torque (Nm)	140	176	224
No load torque (Nm)	1.7	1.8	2.1
Belt	RPP5 / W28	RPP8 / W40	RPP8 / W50
LM Guide	NO.15 / 2 Rail 4 Block	NO.20 / 2 Rail 4 Block	NO.30 / 2 Rail 4 Block
Basic weight (kgf)	4.5	13.6	24.5
Weight per 100mm stroke (kgf)	0.68	1.4	2.2
Motor (W)	100~400W	200~750W	750~1.5KW
Size (mm, W x H)	60 x 80	80 x 105	100 x 130

Note) Customized options such as motor, raydent and LM guide are available.

NQBE structure



► Component list

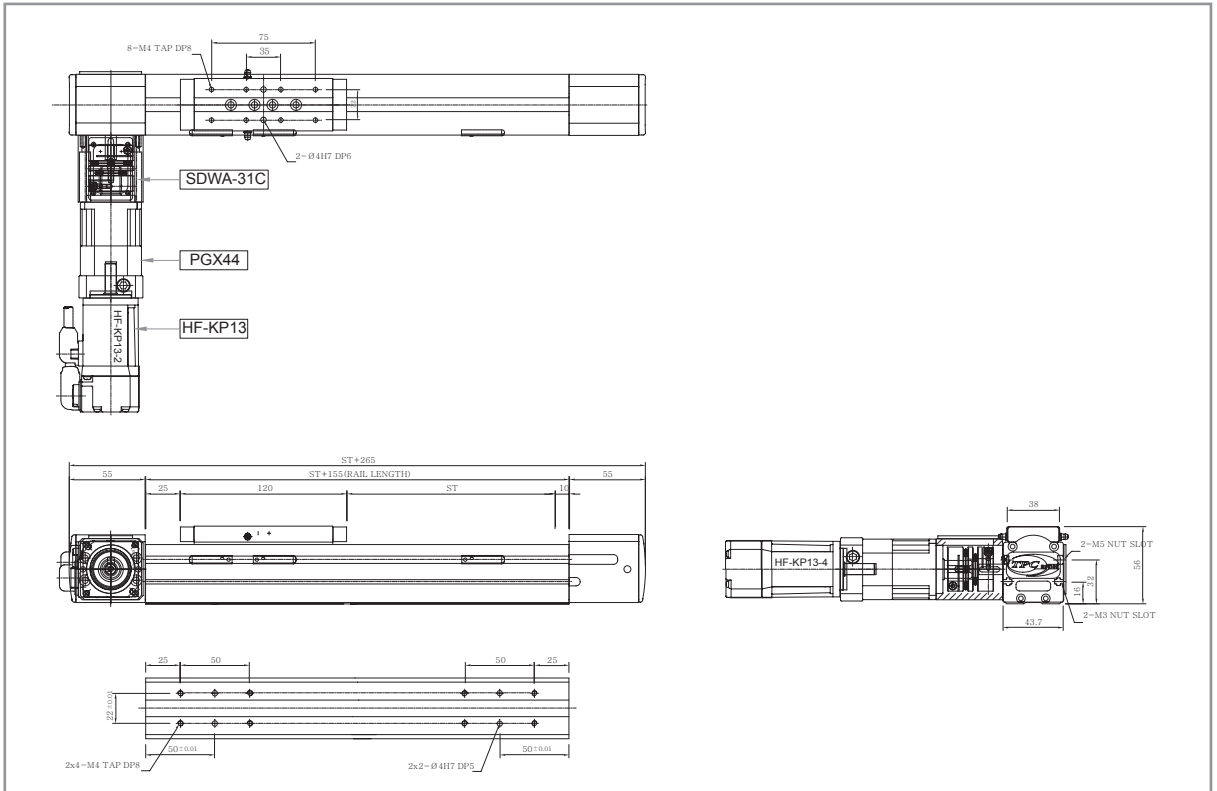
No	Item		Material
1	Side strengthened block		Aluminum alloy
2	Model	LM GUIDE	
	40	No.12 / 2RAIL 4BLOCK	
	60	No.15 / 2RAIL 4BLOCK	
	80	No.20 / 2RAIL 4BLOCK	
	100	No.30 / 2RAIL 4BLOCK	

Note) The other parts are the same as NQB.

Basic specifications

Model	Stroke (mm)	Gear Ratio	Speed (mm/s)	Motor (W)	Max. Payload(kg)	
					Horizontal(0.3G)	Horizontal(0.5G)
NQB40	50~800	10	424	100	20	10
		5	848		10	6

NQB40 Dimensions



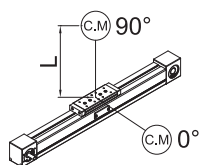
- Please contact us for a change in sensor or motor options.
- Customized TAP or PIN Pitch on the bottom is available.

Weight & speed for each stroke

Stroke(mm)	100	200	300	400	500	600	700	800	Gear Ratio	Motor (W)
Weight(kg)1	1.7	1.9	2.1	2.3	2.5	2.7	2.9	3.1		
Max. Speed (mm/s)	400								10	100
	800								5	

Note1 : Weights of motor and reducer are not included.

Allowable overhang distance



Horizontal(X)

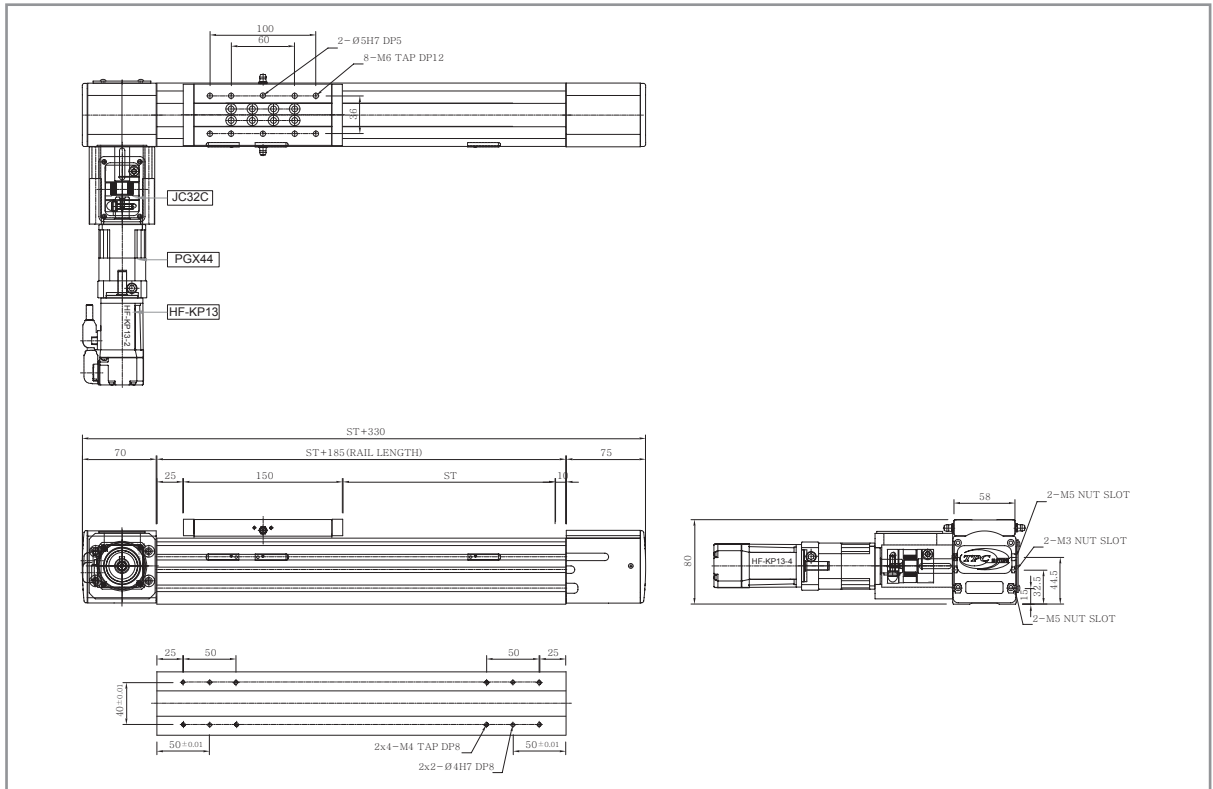
Gear Ratio	Payload	0°	90°
10	8 kg	25 mm	350 mm
	4 kg	55 mm	700 mm
5	4 kg	25 mm	450 mm
	2 kg	60 mm	700 mm

NQB 60

Basic specifications

Model	Stroke (mm)	Gear Ratio	Speed (mm/s)	Motor (W)	Max. Payload(kg)	
					Horizontal(0.3G)	Horizontal(0.5G)
NQB60	50~3500	20	330	200	70	60
		10	650		50	40
		5	1300		15	12

NQB60 Dimensions



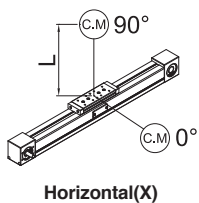
- Please contact us for a change in sensor or motor options.
- Customized TAP or PIN Pitch on the bottom is available.

Weight & speed for each stroke

Stroke(mm)	1000	1100	1200	1300	1400	1500	1600	1700	1800	1900	2000	2200	2400	2600	2800	3000	Gear Ratio	Motor (W)
Weight(kg)†	9.3	9.8	10.4	10.9	11.4	12.0	12.5	13.0	13.5	14.1	14.6	15.7	16.7	17.8	18.8	19.9		
Max. Speed (mm/s)																	20	200
																	10	
																	5	

Note1 : Weights of motor and reducer are not included.

Allowable overhang distance

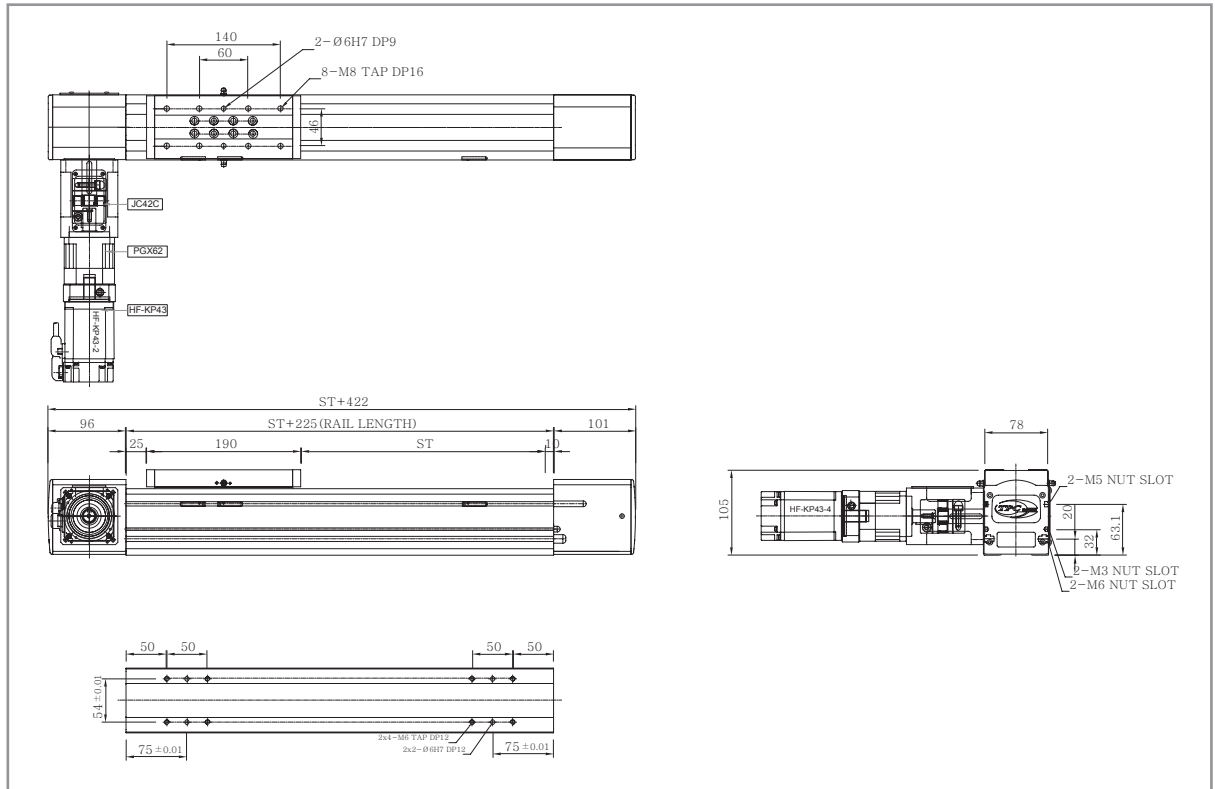


Gear Ratio	Payload	0°		90°	
		0°	90°	0°	90°
20	40 kg	20 mm	750 mm		
	20 kg	50 mm	1000 mm		
10	30 kg	15 mm	400 mm		
	15 kg	40 mm	600 mm		
5	12 kg	20 mm	400 mm		
	6 kg	40 mm	600 mm		

Basic specifications

Model	Stroke (mm)	Gear Ratio	Speed (mm/s)	Motor (W)	Max. Payload(kg)	
					Horizontal(0.3G)	Horizontal(0.5G)
NQB80	50~3700	20	440	400	110	80
		10	880		70	60
		5	1760		25	20

NQB80 Dimensions



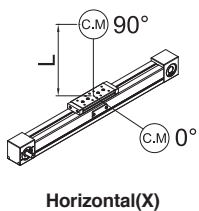
- Please contact us for a change in sensor or motor options.
- Customized TAP or PIN Pitch on the bottom is available.

Weight & speed for each stroke

Stroke(mm)	1000	1100	1200	1300	1400	1500	1600	1700	1800	1900	2000	2500	3000	3500	4000	Gear Ratio	Motor (W)
Weight(kg) ¹	21.9	23.0	24.1	25.2	26.3	27.4	28.5	29.6	30.7	31.8	32.9	38.4	43.9	49.4	54.9		
Max. Speed (mm/s)																440	400
																880	
																1760	

Note1 : Weights of motor and reducer are not included.

Allowable overhang distance



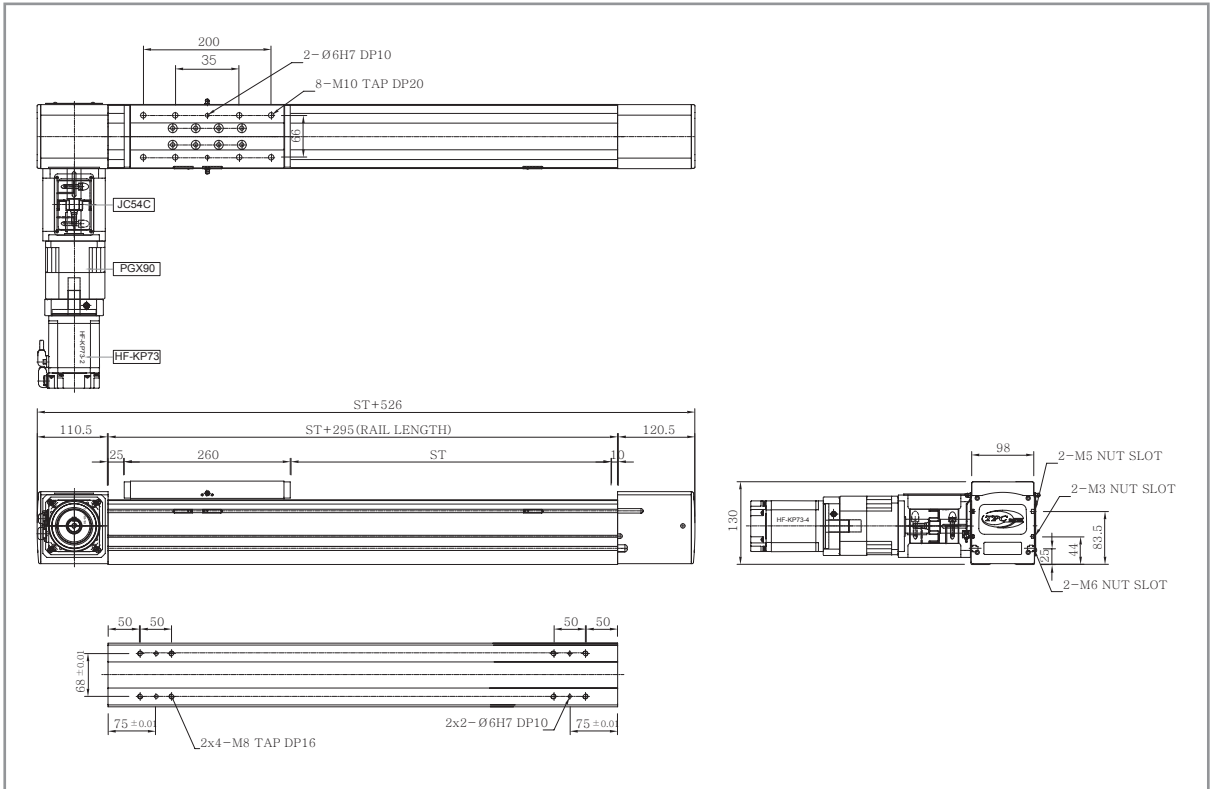
Gear Ratio	Payload	0°		90°	
		0°	90°	0°	90°
20	80 kg	20 mm	500 mm		
	40 kg	40 mm	800 mm		
10	50 kg	20 mm	200 mm		
	25 kg	40 mm	500 mm		
5	20 kg	20 mm	350 mm		
	10 kg	50 mm	550 mm		

NQB 100

Basic specifications

Model	Stroke (mm)	Gear Ratio	Speed (mm/s)	Motor (W)	Max. Payload(kg)	
					Horizontal(0.3G)	Horizontal(0.5G)
NQB100	50~3700	20	560	750	150	120
		10	1120		80	70
		5	2240		40	35

NQB100 Dimensions



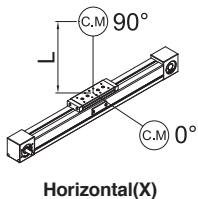
- Please contact us for a change in sensor or motor options.
- Customized TAP or PIN Pitch on the bottom is available.

Weight & speed for each stroke

Stroke(mm)	1000	1100	1200	1300	1400	1500	1600	1700	1800	1900	2000	2500	3000	3500	4000	4500	5000	Gear Ratio	Motor (W)	
Weight(kg)1	37.2	38.9	40.6	42.3	44.0	45.7	47.4	49.1	50.8	52.5	54.2	62.7	71.2	79.7	88.2	96.7	105.2	20	750	
Max. Speed (mm/s)																				10
																				5

Note1 : Weights of motor and reducer are not included.

Allowable overhang distance

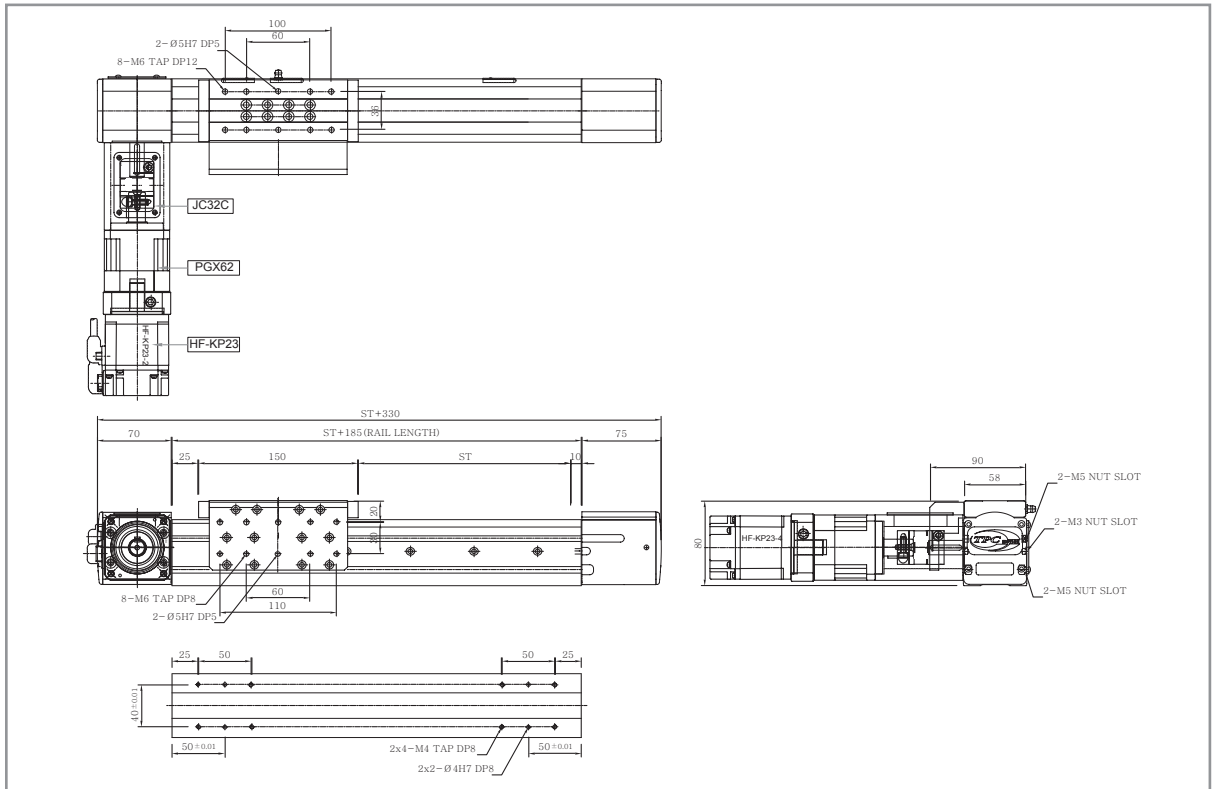


Gear Ratio	Payload	0°		90°	
		0°	90°	0°	90°
20	120 kg	25 mm	300 mm	60 mm	800 mm
	60 kg	60 mm	800 mm	25 mm	300 mm
10	70 kg	25 mm	300 mm	60 mm	600 mm
	35 kg	60 mm	600 mm	25 mm	300 mm
5	30 kg	25 mm	300 mm	60 mm	500 mm
	15 kg	60 mm	500 mm	25 mm	300 mm

Basic specifications

Model	Stroke (mm)	Gear Ratio	Speed (mm/s)	Motor (W)	Max. Payload(kg)	
					Horizontal(0.3G)	Horizontal(0.5G)
NQBE60	50~2800	20	330	200	125	80
		10	650		80	50
		5	1300	400	40	30

NQBE60 Dimensions



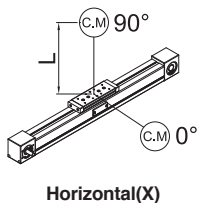
- Please contact us for a change in sensor or motor options.
- Customized TAP or PIN Pitch on the bottom is available.

Weight & speed for each stroke

Stroke(mm)	1000	1100	1200	1300	1400	1500	1600	1700	1800	1900	2000	2200	2400	2600	2800	3000	Gear Ratio	Motor (W)
Weight(kg)1	11.3	12.0	12.7	13.3	14.0	14.7	15.4	16.1	16.7	17.4	18.1	19.5	20.8	22.2	23.5	24.9		
Max. Speed (mm/s)																	20	200
																	10	
																	5	

Note1 : Weights of motor and reducer are not included.

Allowable overhang distance



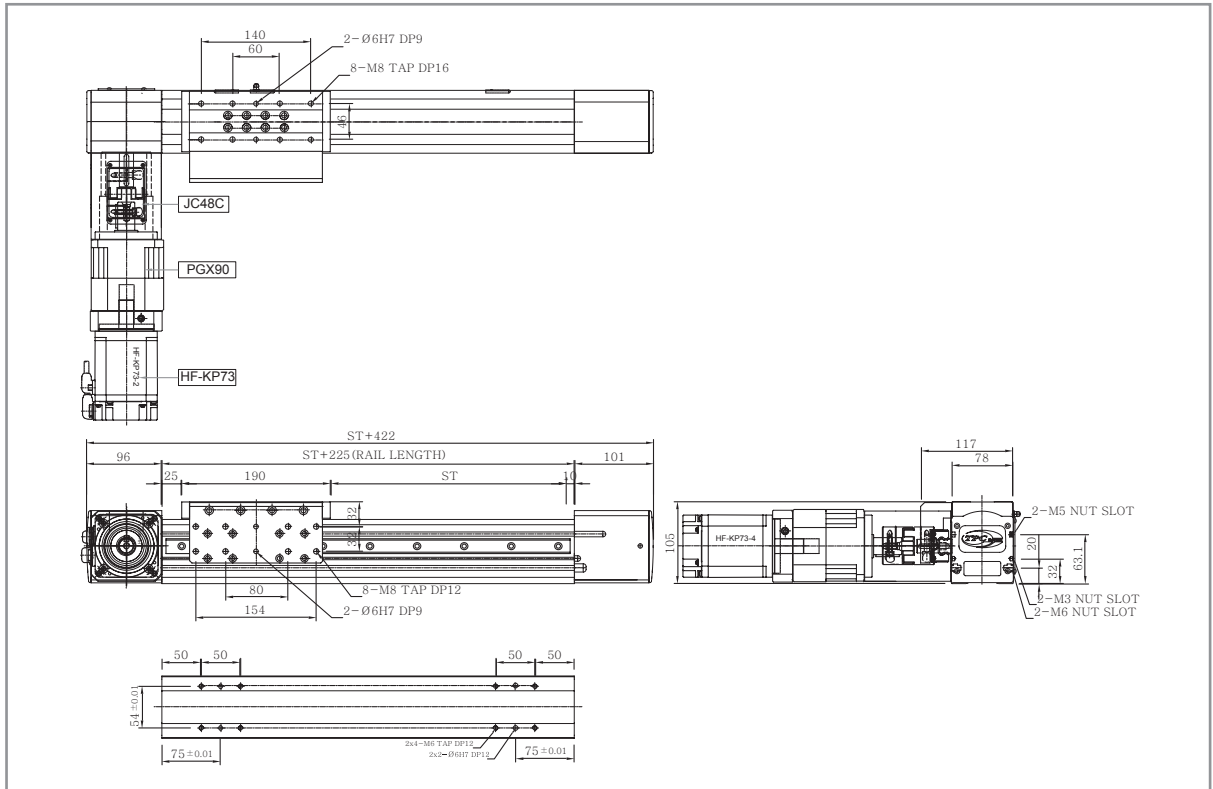
Gear Ratio	Payload	Angle	
		0°	90°
20	80 kg	75 mm	300 mm
	40 kg	150 mm	600 mm
10	50 kg	75 mm	300 mm
	25 kg	150 mm	500 mm
5 (400W)	20 kg	75 mm	250 mm
	10 kg	150 mm	500 mm

NQBE 80

Basic specifications

Model	Stroke (mm)	Gear Ratio	Speed (mm/s)	Motor (W)	Max. Payload(kg)	
					Horizontal(0.3G)	Horizontal(0.5G)
NQBE80	50~3500	20	440	400	150	120
		10	880		90	70
		5	1760	750	60	50

NQBE80 Dimensions



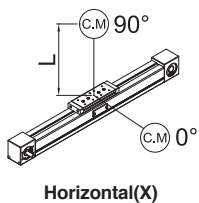
- Please contact us for a change in sensor or motor options.
- Customized TAP or PIN Pitch on the bottom is available.

Weight & speed for each stroke

Stroke(mm)	1000	1100	1200	1300	1400	1500	1600	1700	1800	1900	2000	2500	3000	3500	4000	Gear Ratio	Motor (W)	
Weight(kg)1	27.6	29.0	30.4	31.8	33.2	34.6	36.0	37.4	38.8	40.2	41.6	48.6	55.6	62.6	69.6	20 10 5	400 400 750	
Max. Speed (mm/s)																		440
																		880
																1760		

Note1 : Weights of motor and reducer are not included.

Allowable overhang distance

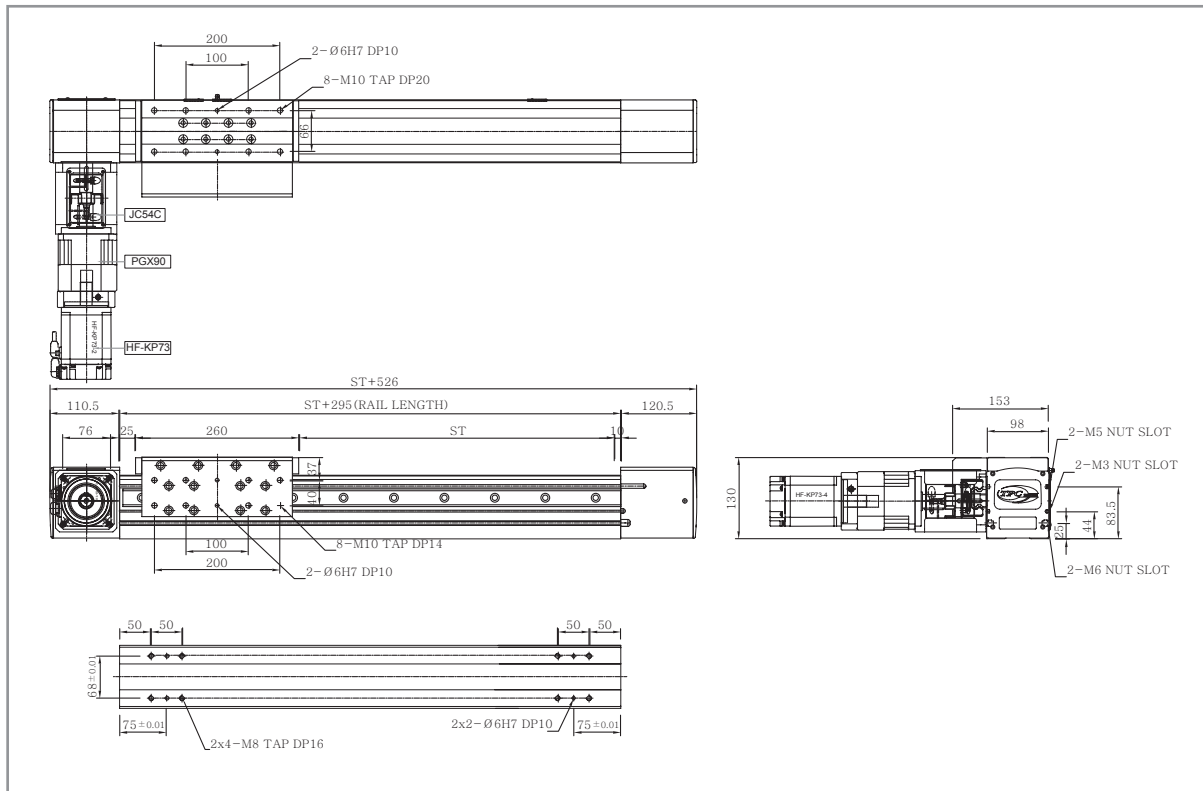


Gear Ratio	Payload	0°		90°	
		0°	90°	0°	90°
20	120 kg	90 mm	400 mm	90 mm	400 mm
	60 kg	180 mm	600 mm	180 mm	600 mm
10	70 kg	90 mm	400 mm	90 mm	400 mm
	35 kg	180 mm	800 mm	180 mm	800 mm
5 (750W)	30 kg	100 mm	300 mm	100 mm	300 mm
	15 kg	200 mm	600 mm	200 mm	600 mm

Basic specifications

Model	Stroke (mm)	Gear Ratio	Speed (mm/s)	Motor (W)	Max. Payload(kg)	
					Horizontal(0.3G)	Horizontal(0.5G)
NQBE100	50~3700	20	560	750	200	170
		10	1120		150	120
		5	2240		100	70

NQBE100 Dimensions



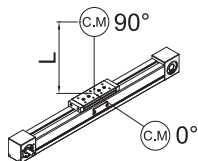
- Please contact us for a change in sensor or motor options.
- Customized TAP or PIN Pitch on the bottom is available.

Weight & speed for each stroke

Stroke(mm)	1000	1100	1200	1300	1400	1500	1600	1700	1800	1900	2000	2500	3000	3500	4000	4500	5000	Gear Ratio	Motor (W)
Weight(kg)	46.5	48.7	50.9	53.1	55.3	57.5	59.7	61.9	64.1	66.3	68.5	79.5	90.5	101.5	112.5	123.5	134.5		
Max. Speed (mm/s)																		20	750
																		10	
																		5	

Note1 : Weights of motor and reducer are not included.

Allowable overhang distance



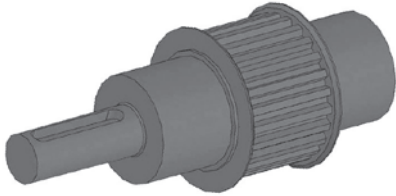
Gear Ratio	Payload	0°		90°	
		0°	90°	0°	90°
20	170 kg	120 mm	500 mm	120 mm	800 mm
	85 kg	250 mm	800 mm	250 mm	800 mm
10	100 kg	120 mm	400 mm	120 mm	800 mm
	50 kg	250 mm	800 mm	250 mm	800 mm
5 (1000W)	50 kg	150 mm	500 mm	150 mm	800 mm
	25 kg	300 mm	800 mm	300 mm	800 mm

NQB PULLEY OPTION

PULLEY OPTION

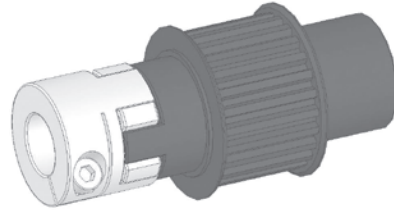
PSH Type

One body type pulley that having driving shaft



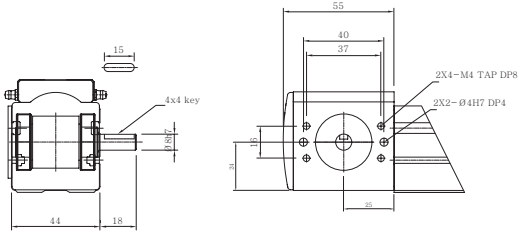
PCP Type

This type pulley is joined with Jaw-coupling directly and supplied with coupling.

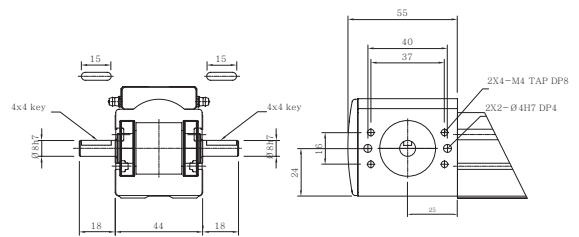


■ NQB40(Pulley components order number)

PSH-S (NQB40-18-ASSY-PL)

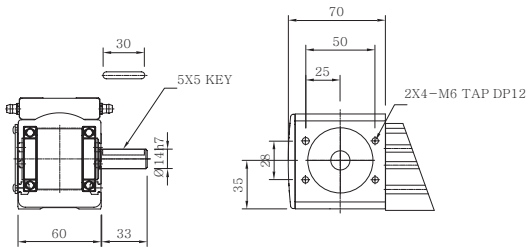


PSH-C (NQB40-20-ASSY-PL)

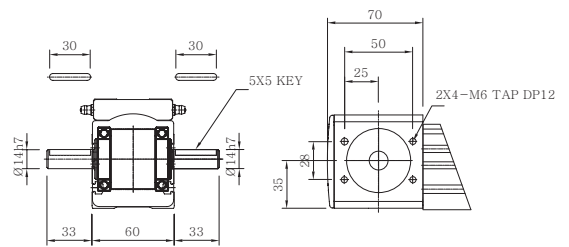


■ NQB60/NQBE60(Pulley components order number)

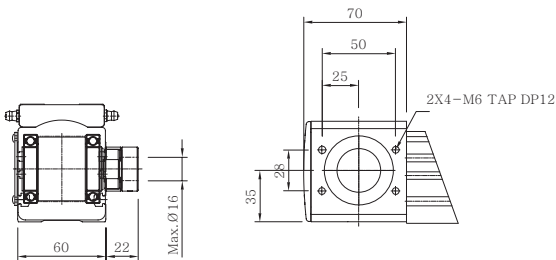
PSH-S (NQB60-18-ASSY-PL)



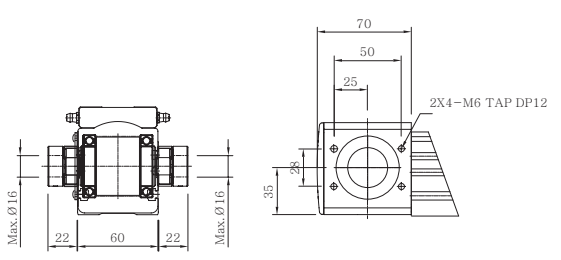
PSH-D (NQB60-19-ASSY-PL)



PCP-S (NQB60-21-ASSY-PL)



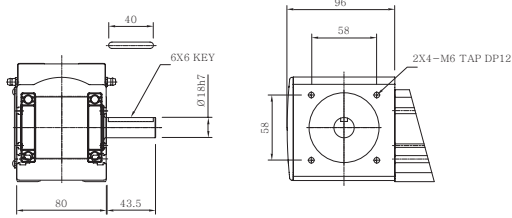
PCP-D (NQB60-22-ASSY-PL)



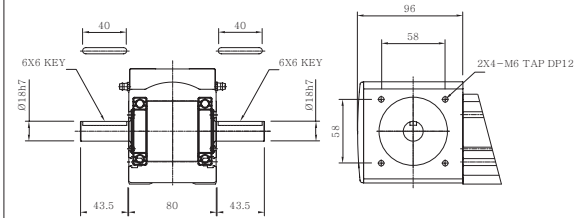
NQB Series PULLEY OPTION

■ NQB80/NQBE80(Pulley components order number)

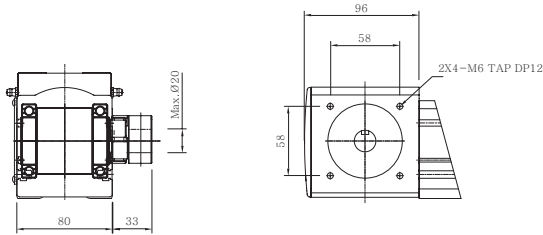
PSH-S (NQB80-18-ASSY-PL)



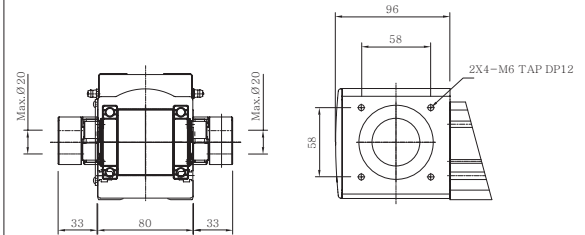
PSH-D (NQB80-19-ASSY-PL)



PCP-S (NQB80-21-ASSY-PL)

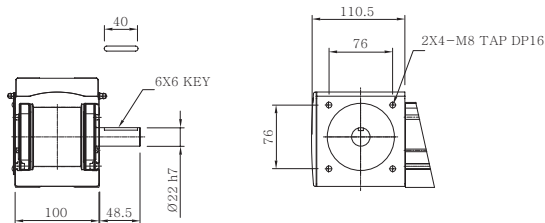


PCP-D (NQB80-22-ASSY-PL)

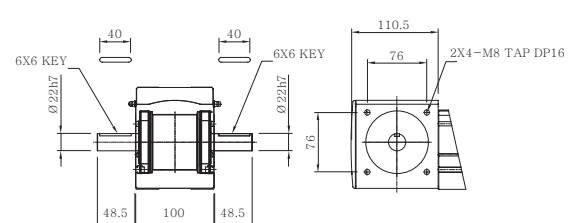


■ NQB100/NQBE100(Pulley components order number)

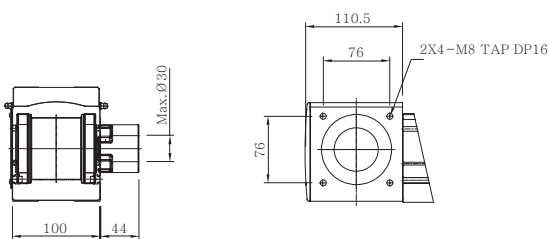
PSH-S (NQB100-18-ASSY-PL)



PSH-D (NQB100-19-ASSY-PL)



PCP-S (NQB100-21-ASSY-PL)



PCP-D (NQB100-22-ASSY-PL)

